

- Obtained ISO 9001 Certificate
- Invention patent No0342176
- Obtained ISO 14001 Certificate
- KS Product-certified Company
- KC Certified Company
- Eco-Friendly Certificated Company

DONGYANG EPOXY

EPOXY
URETHANE
MAGIC FLOOR MATERIALS



Manufacturing company for epoxy, urethane and magic floor materials
DONGYANG EPOXY CO., LTD.

Factory 1 / Head office

Add 30, Hwanggeum 6-ro, Yangchon-eup,
Gimpo-si, Gyeonggi-do, Republic of Korea
Tel +82-31-996-8822~3 **Fax** +82-31-983-4586

Factory 2

Add 123, Jeolgol-ro 127beon-gil, Tongjin-eup,
Gimpo-si, Gyeonggi-do, Republic of Korea



Manufacturing company for epoxy, urethane and magic floor materials
DONGYANG EPOXY CO., LTD.

A company that puts people
and the environment first
DONGYANG EPOXY

01. Crystal resin(for curing 24h) DYW-24	06
02. Crystal resin(for curing 72h) DYW-72	07
03. Crystal(soft)resin DYS	08
04. Magic Interior Epoxy Flooring THC-3004C	09
05. Crystal resin (for table top) DY-88	10
06. Shretonbean gravel epoxy resin DY-3100	11
07. poxy bond for Anitile DY-202	12
08. Epoxy bond for Anitile (eco-friendly) DY-202	13
09. Epoxy bond for Anistone DY-101	14
10. Magic tile joint sealing agent DY-BEST	15
11. Steel Plate Reinforcement D-130 (Injection Agent for Steel Plate Pressing and Injection)	16
12. DRY LOW VISCOSITY D-200 (Small Crack Injection Agent for Concrete Structures)	17
13. DRY SEALANT D-400 (Sealing for cracked pedestal,for steel plate reinforcement)	18
14. WET INJECTION AGENT D-800 (Wet surface crack repair agent for concrete structures)	19
15. WET SEALANT GS-500 (For crack filling repair in concrete)	20
16. MID-HARDNESS URETHANE FOAM GROUT D-30 (Concrete, underground structure index only)	21
17. EPOXY PRIMER AGENT THC-3002	22
18. EPOXY COATING AGENT THC-3003	23
19. EPOXY LINING AGENT THC-3004	24
20. NONSLIP POWDER DY-0007	25
21. INSULATION WATERPROOF PAINT DY-POWER PLUS COAT	26



Obtained ISO 9001 Certificate, Invention patent No0342176,
Obtained ISO 14001 Certificate, KS Product-certified Company

Dongyang Epoxy Co., Ltd. established in 1986 has endeavored with its best and pursue changes since its foundation.

Based on such efforts, at this moment in the existing o a lot of alternatives global competition we recognize the importance of the environment for win-win life other than commercial purpose, and with the social responsibility to make quality helping people such as energy saving we have grown pursuing change and innovation before others.

Also, based on more than 30years engineering knowhow accumulated our continuous research and development, we have produced and supplied concrete repair and reinforcement material, electric isolation epoxy, epoxy for art, interior epoxy, electric & electronic epoxy, industrial epoxy, thermal shield water-proof material, urea adhesive and acrylic water shield material in Korea and to overseas countries.

We commit followings in preparing 4th industrial revolution era:

Dongyang Epoxy Co., Ltd. will build up confidence through continuous trading, minimize customer's concerns and dissatisfaction through development of differentiated quality product and careful and strict quality inspection, improve customer satisfaction and aim fair trade by concentrating in development of ECO-friendly material.

We commit to endeavor in making the earth where everyone lives together.

From all management and employee of Dongyang Epoxy Co., Ltd



History

- 2021

- Selected for KOSME's project to establish a domestic export company
 - Received an award for regional economic development from the National Assembly
 - Acquired the Korea Eco-Labe by KEITI
 - Received an award for regional economic development from the National Assembly
 - Expanded Plant 1/HQ at Hakun Industrial Complex in Yangchon-eup
- 2020

- Received the SME for Technological Innovation (Inno-Biz) Certificate
- 2018

- Received the SME Management Award
 - Received an award for local volunteer activities from mayor of Gimpo
 - Received an award for economic development from the National Assembly
 - Received an SME award from mayor of Gimpo
- 2016

- Acquired the best certification for eco-friendly building materials
- 2015

- Selected as a company for 2015 Export Promotion Project for Domesti..
 - Overseas private network conclusion
 - KC Certified Company
- 2014

- Obtained KS Certificate
- 2013

- Extension of production facilities
- 2009

- PT. Established Dong Yang Epoxy China Cheongdo Foundation
 - PT. Established Dong Yang Epoxy Vietnam Ho Chi Minh Foundati..
- 2008

- PT Established Dong Yang Epoxy Indonesia Foundation
 - Research team Acquisition
 - Innovation minor enterprise Acquisition
- 2007

- Affiliated and designated to Gyeonggi Internet trading frontier..
- 2005

- ISO-14001(Environment management sy stem) certificate acquisitio..
- 2004

- Export waterproof material and flooring material to Southeast Asian..
 - Increased secondary production facilities
 - Warranty of quality acquisition from Korean Institute of Construction Materi..
- 2002

- Registered Invention Patent No.0342176
 - Registration of the member for Korean International Trade Association
- 2001

- Increased factory
- 2000

- Q mark Acquisition
 - Increased production facilities
 - Expanded the site for the factory
 - Registered business licenses for plastering work, water-proofing work
 - Moved the head office to Bucheon techno-park by extension
- 1999

- Converted the company to Dong Yang Epoxy Co., Ltd
 - Registration of trademark & tradename
 - Export reinforcement and supplement materials to Southeast Asia
- 1998

- ISO-9001 Acquisition
- 1997

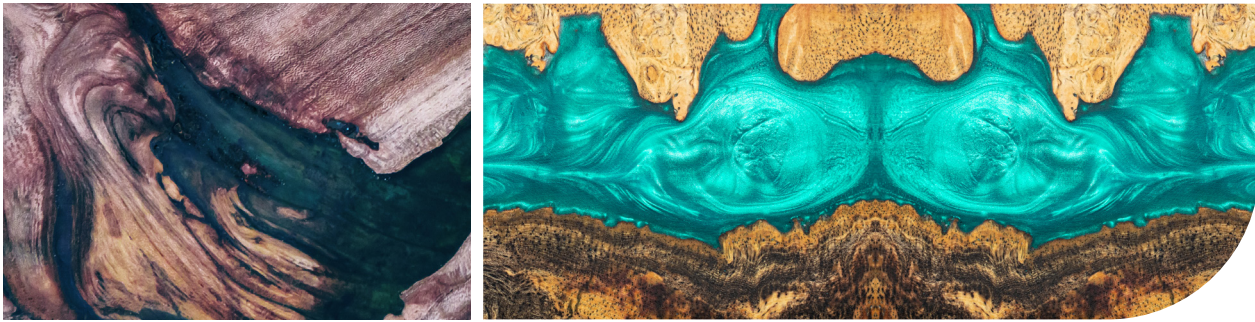
- Test equipment establishment
- 1996

- Completed to build Kimpo Factory
- 1986

- Established Dong Yang Epoxy Development Co.

01 CRYSTAL RESIN(FOR CURING 24H) DYW-24

Crystal Resin (DYW-24) is a high transparency epoxy resin, which is a specialized product designed to be used for making river table, epoxy table, woodcraft, resin art, accessory, sculpture, mold, model, etc



Features

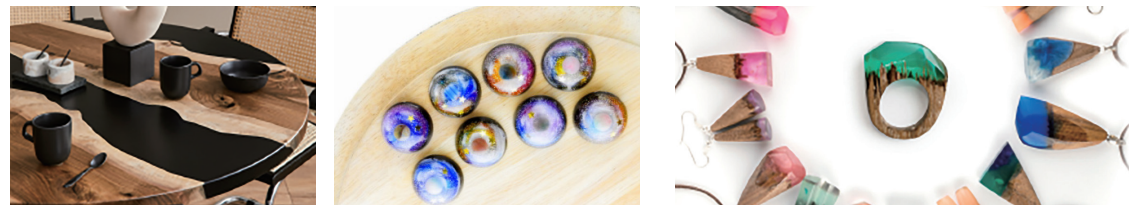
- Very clear high transparency.
- Excellent adhesion to wood or stone.
- Excellent workability with low viscosity.
- No bubble is formed.
- Easily mixed with pigment or dyestuff.
- No yellowing.
- Thick application available at once.
- The curing time is very short as 24 hours.

Applications

- Making epoxy table (river table)
- Making woodcraft, Making resin art
- Making model, accessory, sculpture, mold, etc.

How to use

- Prepare an empty container.
- Weigh the required amount to the mixing ratio (Weight Ratio = 2:1) using a scale.
- If coloring (pigment or dyestuff) is added, first add it to and mix with the base compound..
- Mix the base compound with curing agent well.(Mix in one direction to minimize bubbles.)
- Transfer the mixed base compound and curing agent to another empty contain.
(Make sure that no resin is left at the inside of the first used container.)
- Mix the resin (base compound + curing agent) transferred to another container again well.
- Wait for a certain time allowing bubbles to be discharged.
- Pour the resin in the prepared mold.



02 CRYSTAL RESIN(FOR CURING 72H) DYW-72

Crystal Resin (DYW-72) is a high transparency epoxy resin, which is a specialized product designed to be used for making river table, epoxy table, woodcraft, resin art, accessory, sculpture, mold, model, etc



Features

- Very clear high transparency.
- Excellent adhesion to wood or stone.
- Excellent workability with low viscosity.
- No bubble is formed.
- Easily mixed with pigment or dyestuff.
- No yellowing.
- Thick application available at once.
- The curing time is very short as 24 hours.

Applications

- Making epoxy table (river table)
- Making woodcraft, Making resin art
- Making model, accessory, sculpture, mold, etc.

How to use

- Prepare an empty container.
- Weigh the required amount to the mixing ratio (Weight Ratio = 100:33) using a scale.
- If coloring (pigment or dyestuff) is added, first add it to and mix with the base compound..
- Mix the base compound with curing agent well.(Mix in one direction to minimize bubbles.)
- Transfer the mixed base compound and curing agent to another empty contain.
(Make sure that no resin is left at the inside of the first used container.)
- Mix the resin (base compound + curing agent) transferred to another container again well.
- Wait for a certain time allowing bubbles to be discharged.
- Pour the resin in the prepared mold.



03 CRYSTAL(SOFT)RESIN DYS

Crystal (Soft) Resin is a high transparency product and has almost no bubbles and odor, thereby developed as a soft resin product for room-temperature hardening that anyone can use easily at home or classes for making solid herbariums, diffusers, resin art, visual crafts, etc.



Features

- Most existing acrylic resins and epoxy resin products have a unique odor during production, or require removal of bubbles using a vacuum device, thus making it very difficult to work with at home. Our Crystal (Soft) Resin is a product developed by complementing to such disadvantage.
- The main ingredient of Crystal (Soft) Resin is silicon resin.
- This is a safe material used even in home kitchens, and this has no odor or harmful gases and is safe on the skin as well. Furthermore, it has similar transparency as acrylic and epoxy resins, and has strong durability that can withstand deterioration caused by UV rays.
- In addition, it was upgraded to make it bubble removal easy with low viscosity.

Applications

- For art class and practice
- For individual and group hands-on experience
- For both experts and non-experts

How to use

- Level the work table and cover with plastic, etc. to prevent contamination.
- Remove contamination and dust from the frame and dry completely.
- Layout the contents in the frame.
- Mix the main solution and hardener at a weight ratio of 100:50 in the mixing container. Make sure to use a scale to measure. (Margin of error must be within 5%)
- Use a stirring rod to mix for 2 minutes.
 - * When mixing, mix about 3 times per second, and try to mix in a way so bubbles do not form.
- Also make sure to thoroughly mix so that the ends are mixed well.
- Once mixing is complete, pour while avoiding the frame. Use a stirring rod and pour, making sure bubbles do not form.
- Complete the process above within 1 hour.
- Hardening time varies greatly depending on the temperature (room temperature and liquid temperature), so please refer to the table below.



04 MAGIC INTERIOR EPOXY FLOORING THC-3004C

Buildings or structures are constructed by combination of various types of designs and construction methods according to the needs of the times. Especially in this day and age, the trend is moving toward luxuriousness and flooring materials are also changing diversely. THC-3004C Magic Epoxy is not easily broken and has a long life because it is three times stronger than the strength of concrete thickness and it is a next-generation magic flooring drastically improved in simple impression of color and texture of the existing vintage flooring, tile, epoxy transparency and terrazzo flooring.



Features

- Applicable without removal of the existing flooring (vintage flooring, transparent epoxy, tile, terrazzo flooring or marble)
- Shorter construction period than vintage flooring, tile or marble
- Excellent adhesion and durability
- Excellent dust proofing and waterproofing properties
- Good working property due to excellent self-levelling property
- Convenient to clean and easy to repair partially due to flatness without joint
- Various colors and textures are available

Applications

- The proper ambient temperature for application or curing is 10°C~30°C and the temperature of the prepared surface should be higher by 3°C and more than the dew point to avoid moisture condensation.
- How to mix each product: Add a 200g container of pear to the curing agent and mix them well evenly with a low-speed stirrer for 4~5 minutes and then mix them well with a container of base compound with a low-speed stirrer for 4~5 minutes.

How to use

- Cafe, Hair salon, Beauty shop, Mobile phone shop
- Restaurant, Office, Convenient store, Shopping mall
- Mart, Theater
- Exhibition hall, Karaoke room
- Hotel or motel lobby and corridor
- Available for room or living room with unheated floor



05 CRYSTAL RESIN (FOR TABLE TOP) DY-88

Crystal Resin, which was newly developed according to the rapidly changing times, was created as the best product with luxurious pearly finish to offer the greatest satisfaction. It is a product that pursues a premium and luxurious look much greater than normal marble, wood, and ceramic (porcelain) tables.

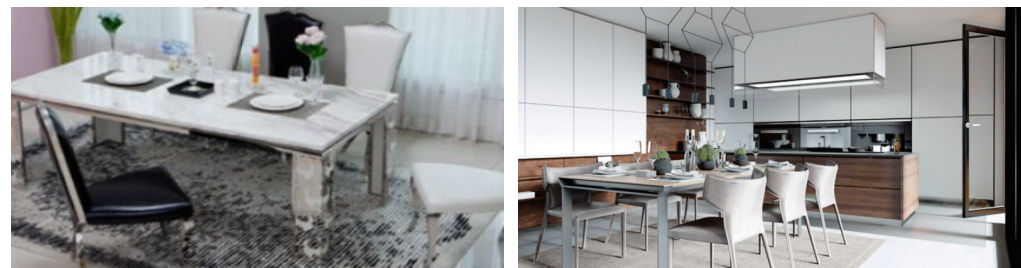
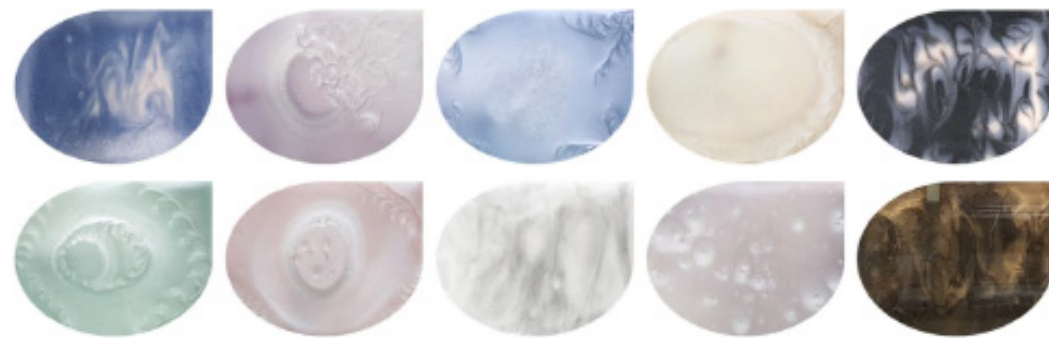


Applications

- It can be used on table boards and looks much more luxurious in real life than in photos.

uses

- Interior flooring (Crystal Resin)
- Hotel lobby, golf course lobby, convention halls, beauty salons, etc.
- Department stores, cafes, fine-dining restaurants, offices, etc.



06 SHRETONBEAN GRAVEL EPOXY RESIN DY-3100

as the natural gravel collected from river or coast and abraded gravels which crush the natural raw stone, it is a high quality interior resin epoxy floor finishing material that can be installed on the base floor, inside and outside walls, and well suited to the surrounding environment by mixing epoxy resin.



Features

- It can be harmonized with the surrounding environment and can display graphics, logos or pictures, and text, etc in various colors
- It has High adhesion, durability, weather resistance, and good drainage.
- It is economical because construction time can be shortened compared to other materials due to easy construction

Applications

- Making epoxy table (river table)
- Making woodcraft, Making resin art
- Making model, accessory, sculpture, mold, etc.

uses

- Interior or exterior floor, park, walkway, parking lot and around the building
- A rooftop garden, a staircase, a building interior and exterior wall decoration, a place required non-slip

Properties

Category	Bean gravel epoxy resin
Main Ingredients	Epoxy Resin, amin
Outlook	Transparent
Mixing Ratio	Main: Hardener=100:50
pot Life	50min±10(25°C)
Finger Touch Cure Time	8hours±3(25°C)
Complete cure Time	24 ~ 36hours(25°C)



07 EPOXY BOND FOR ANITILE DY-202

This product is an adhesive with excellent adhesive strength and resistance to water for tile, marble and artificial marble and a high-performance two component liquid type reactive adhesive with an excellent workability. In addition, it is easy to use as mixing base material with hardening agent at the ratio of 1 : 1



Features

- This is a special epoxy product and has outstanding adhesiveness and durability.
- It has excellent initial adhesiveness and is convenient to use thanks to its broad mixing range.
- Products are manufactured according to the seasonal work conditions and it has broad range of hardening conditions.
- It refers to 80% hardening and properties, and the completion time for chemical reaction is about 168 hours (7 days) at room temperature of 25°C. Longer curing time is required when working in closed spaces, when high durability is required, or when acid-resistant performance is needed.

How to use

- After mixing the main epoxy solution and hardener, the tile attachment must be completed before film is generated.
- The amount of epoxy bond used should be around 25%~35% considering the material, weight, and size of tiles.
- After bonding the epoxy on the back of the tile, install by attaching close to the concrete wall with 95% or higher adhesive.
- After the epoxy bond hardens (cure for 2~3 days), join using remitar.
- When storing for prolonged periods at low temperature, the paste viscosity will rise and affect workability, so store and do the work at 5°C or higher.

Properties



Subject	Base material	Hardening agent
Main ingredient	Epoxy Resin	Polyamin Resin
Color	Milky White	Gray
Capacity	10kg PE Can	10kg PE Can
Tile for application	Earthenware, Porcelain, Stoneware, Stone	
Standard amount used	abt. 3~4kg/m ² , abt. 5~6m ² 20kg(1set) based on tile attachment method (The amount used may be increased or decrease according to type and size of tile.)	
Pot life(after mixing)	abt. 35-45 minutes (in standard condition: Time may be increased or decreased according to the season and environment)	
Mixing Ratio	1:1(Base material : Hardening agent)	
Shelf Life	6 months from date of manufacture	
Specific Gravity	1.6	1.6
Viscosity(cps)	60,000	60,000

08 EPOXY BOND FOR ANITILE (ECO-FRIENDLY) DY-202

Eco-friendly Tile Adhesive for Sick House Syndrome & Constructor's Health

This adhesive for tiles, marbles and synthetic marbles is a two-component reaction adhesive with superior adhesive strength, water resistance and outstanding performance. This adhesive has spring & autumn type, summer type and winter type depending on the season. Unlike existing products, this eco-friendly product is without volatile organic compounds, formaldehyde, phenol, benzene, etc. and selected as the Eco-Friendly Certificated Product.



Features

- This is a special epoxy product and has outstanding adhesiveness and durability.
- It has excellent initial adhesiveness and is convenient to use thanks to its broad mixing range.
- Products are manufactured according to the seasonal work conditions and it has broad range of hardening conditions.
- It refers to 80% hardening and properties, and the completion time for chemical reaction is about 168 hours (7 days) at room temperature of 25°C. Longer curing time is required when working in closed spaces or when high durability is needed.

How to use

- Completely remove dust, oil (grease), and other foreign particles on the wall and back of the tile.
- Accurately measure the main solution and hardener at a ratio of 1:1 (weight ratio) and mix properly.
- Take a moderate amount of mixed epoxy and calculate the bonding fluid, then attach. Hardening time may be delayed or there may be defective adhesion (if ratio is inaccurate or if not mixed well).
- The moderate amount of epoxy may vary depending on the tile material and weight (size), and the single application area should be limited to an amount that can be applied within 10 minutes.

Properties



Subject	Base material	Hardening agent
Main ingredient	Epoxy Resin	Polyamin Resin
Color	Milky White	light yellow
Capacity	10kg PE Can	10kg PE Can
Tile for application	Earthenware, Porcelain, Stoneware, Stone	
Standard amount used	abt. 3~4kg/m ² , abt. 5~6m ² 20kg(1set) based on tile attachment method (The amount used may be increased or decrease according to type and size of tile.)	
Pot life(after mixing)	abt. 35-45 minutes (in standard condition: Time may be increased or decreased according to the season and environment)	
Mixing Ratio	1:1(Base material : Hardening agent)	
Shelf Life	6 months from date of manufacture	
Specific Gravity	1.6	1.6
Viscosity(cps)	60,000	60,000

09 EPOXY BOND FOR ANISTONE DY-101

This product is a fast initial hardening adhesive for stone materials and has excellent adhesion on the wet surface and is a high-performance two-component reactive adhesive without discoloration, staining, or smearing on the stone surface. It is also an easy-to-use, high-performance epoxy adhesive in a 1:1 ratio of base material and hardening agent.



How to use

- Completely remove dust, oil (grease), and other foreign particles on the surface, wall and stone (marble) adhesion side.
- Accurately measure the main solution and hardener at a ratio of 1:1 (weight ratio) and mix properly.
- Mix and use moderate amount of the product and use within the pot time.
- Immediately wash with soap water if it comes in contact with the skin.
- When adhesive gets on the stone's surface, clean immediately with paint thinner, etc.
- Apply mixed adhesive on angled parts and apply on the left and right sides of the stone material. • After completing the stone work, proceed with joining (silicone) the materials.
- When storing for prolonged periods at low temperature, the paste viscosity will rise and affect workability, so store and install at 5°C or higher.

Quality



Subject	Base material	Hardening agent
Main ingredient	Epoxy Resin	Polyamin Resin
Color	Milky White	Gray
Capacity	10kg PE Can	10kg PE Can
Tile for application	Stone Marble	
Standard amount used	abt. 1.0~1.5kg/m ² , abt. 13~20m ² 20kg(1set) based on dotted application (The amount used varies depending on the site condition and work method.)	
Pot life(after mixing)	abt. 10-20minutes (in standard condition: Time may be increased or decreased according to the season and environment)	
Mixing Ratio	1:1(Base material : Hardening agent)	
Shelf Life	6 months from date of manufacture	

10 MAGIC TILE JOINT SEALING AGENT DY-BEST

With the changing times, toilets are also a fashion era!

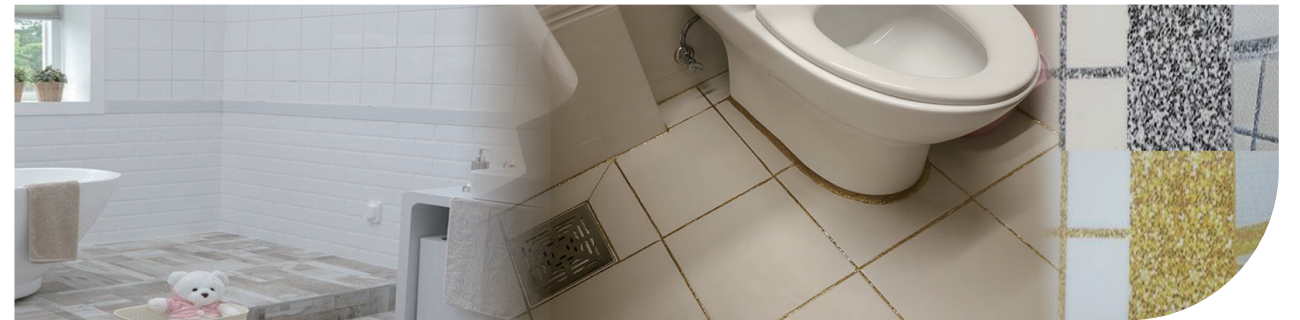
No more stains, molds, and smells between the toilet tiles!

No more toxic detergent cleaning!

With one construction, semi-permanent construction!

A hybrid eco-friendly uretile joint liquid that always feels like a new house (toilet).

It is easy to construct self-construct at low cost and it can fill the toilet culture with a classy space.

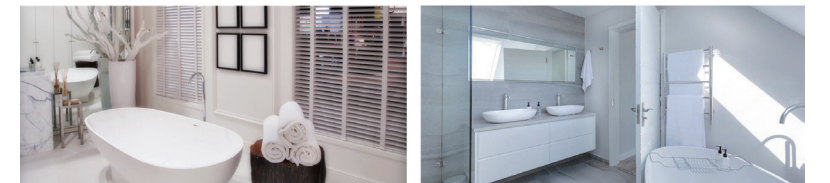


Applications

- Products : Floor use: Bathroom floor, porch floor, veranda floor, etc.
- Products : For Walls use: Bathtubs , Lower Toilets, Bathroom Walls, etc.

How to use

- Clean the tile floor before using, scrape out stains, molds, and contaminated areas between tiles, and create suitable grooves.
- Remove foreign substances and moisture completely, and stir the pul in the large bottle (pul+main ingredient) well with a long stick like chopsticks in a state of complete dryness, and then stir in a small bottle (hardener) in a large bottle for about a minute to mix well.(Main ingredient: Stir enough to mix the hardening agent well. if not mixed enough, it can cause defects.)
- Caution :Also, be careful when mixing too much, because it causes heat.
- After changing tip of the long stopper tap in large bottle (pul container), cut the tap at an angle slightly. And apply the product(tile joint liquid) to avoid overflowing the tile top with the desired tile groove.
- Main ingredient: You should use it in 30 minutes after mixing hardeners.
- Do not use water on the floor until it dries after applying the product(tile joint liquid).



11 STEEL PLATE REINFORCEMENT (INJECTION AGENT FOR STEEL PLATE PRESSING AND INJECTION) D-130

D-130 injection agent is a medium-viscosity type resin injection agent manufactured for structural reinforcement, heaving reinforcement, and steel plate compression injection by maximizing the advantages of epoxy resin. Since it is a medium-viscosity type, voids are not generated, and it can be easily grouted in crack repair and when cracks occur in bridges, dams, columns, beams, slabs, etc. After hardening, it has excellent mechanical strength, which greatly contributes to corrosion protection of rebar and restoration of concrete strength.



Features

- Since it is a medium-viscosity type, it can be used for both iron plate pressing and crack repair.
- The automatic injector and microcapsule method can be used easily.
- Since it is a medium-viscosity type, it is easy to stir.
- Since it is a medium-viscosity type, there is no void during injection.
- Almost no shrinkage after curing.

uses

- Injection into the mid-cracks of concrete structures.
- Steel plate reinforcement and compression injection.
- Filling in the heaving area of the bottom.
- Injection into the base load area of the machine.

Quality

Item	Subject	D-130
Main ingredient		Epoxy Resin, Polyamidamin
color		Dark Brown
Mixing Ratio		Main : Hardener = 2 : 1
Pot Life		90min ± 10 (25°C)
Finger Touch Cure Time		18hours ± 5 (25°C)
Curing time		24 ~ 36hours (25°C)
Curing time		Under 0.5mm crack

12 DRY LOW VISCOSITY (SMALL CRACK INJECTION AGENT FOR CONCRETE STRUCTURES) D-200

To make use of the merit of Epoxy to the maximum, D-200 is made for the reinforcement of structure, floating parts (loose parts) and for injection under iron plate. Low viscosity type does not make gaps during injection and it is easy to grout in order to repair the cracks of bridge, dams, columns and slabs. It contributes to restore the strength of concrete because its physical strength is strong and adhesive strength, anti-corrosive and anti-rust effect is excellent.



Features

- It adheres strongly to cement mortar and concrete reinforcing bars.
- Excellent weather resistance, water resistance and durability.
- It is possible to completely inject even small cracks.
- It has excellent workability and is suitable for low pressure injection.
- Almost no shrinkage after curing.

Uses

- Repaired by injecting into cracks in concrete structures.
- Injected into cracks in PC boards and concrete molded products.
- Reinforced anchors of slabs, columns, and tops.
- Injected into the heaving area of plastering mortar, plastering tiles, etc. of the concrete
- Reinforced by penetrating into the aging and vulnerable

Quality

Item	Base material (Component A)	Hardening agent (Component B)
Main ingredient	Epoxy resin	Modified aliphatic amines
Appearance	Colorless transparent liquid	Lemon yellow transparent liquid
Mixing viscosity	(25°C) 650±100 mpas	
Mixing specific gravity	1.15±0.1	
Mixing ratio (weight ratio)	Component A : Component B = 2 : 1	
Pot life	(25°C) 100g Mixing 50 minutes	
Curing time	(25°C) 100g Mixing 48 hours	

*Cure time : the time when about 80% of the final strength is achieved

13 DRY SEALANT (SEALING FOR CRACKED PEDESTAL, FOR STEEL PLATE REINFORCEMENT) D-400

D-400 Dry Sealant (Sealing Agent) of Dongyang Epoxy Co., Ltd. is a product that has been researched and developed with an epoxy resin as the main component and it is processed to be suitable for multi-use purposes such as fixing and attaching the pedestal when repairing cracks in concrete structures, surface sealing, and steel plate reinforcement sealing, so it has good durability and chemical resistance.



Features

- No dripping or sagging.
- Mixing and sealing work is good.
- Excellent adhesion to materials such as concrete, steel plate, and wood, etc.
- Easy to remove after work.
- No shrinkage after curing.

uses

- Used for crack repair pedestal attachment
- Sealing on cracked surfaces
- Applying to the reinforcing part of the steel plate
- Used for other multi-purpose adhesives
- Used for bonding large tiles

Properties

Item \ Subject	Base material	Base material	Base material	Base material
Main ingredient	Epoxy resin	Polyamideamine		
Appearance color	White	Light black	Light gray	
Mixing ratio	1	1	100/100	
Pot life			Room temperature 50 min	±10
Curing time			Room temperature 24 hours	±1

*Cure time : the time when about 80% of the final strength is achieved

14 WET INJECTION AGENT (WET SURFACE CRACK REPAIR AGENT FOR CONCRETE STRUCTURES) D-800

D-800 Wet Injection Agent is a low-viscosity type of injection material on the wet surface and it is a product that exhibits excellent properties in wet surface and can have excellent effects even if injected after urethane water repellent.



Features

- As it is a low-viscosity type, the mixing properties of the base material and hardening agent are good.
- It has excellent weather resistance, water resistance and abrasion resistance.
- It is possible to completely inject even the micro cracks.
- It has excellent workability and is suitable for low pressure injection.
- Almost no shrinkage after curing.

Uses

- Application to wet surface.
- Application after urethane water-stopping work.

Quality

Item \ Subject	D-800
Main Ingredients	Epoxy Resin, Polyamidamin
Color	Yellowish Brown
Mixing Ratio	Main : Hardener = 2 : 1
Pot Life	Based on major material + hardening material 40min ± 10 (25°C) 10 mixing ratio 100g
Finger Touch Cure Time	18hours ± 5 (25°C)
Curing Time	24 ~ 36hours (25°C)
Application Range	For injection to wet area

15

WET SEALANT
(FOR CRACK FILLING REPAIR IN CONCRETE)
GS-500

Joiner-W as underwater sealing material does not dissolve in water and adheres closely to concrete structures. Generally, underwater type is used as sealing material for harbor, dam, water gate, water tank or waterway. It's better to use as the sealing material to fill the V-cutting area up after injecting urethane foaming agent. GS-500 sealing material is used for sealing the cracks of damp areas and features the high level of adhesion.



Features

- Does not loosen even on wet surfaces
- Excellent adhesion on wet surfaces
- Strong water resistance

uses

- Ports, waterways, dams, shipyards, subways, etc.
- Piers, bridges, water tanks, reservoirs, lighthouses, etc.
- Other underwater structures or wet places

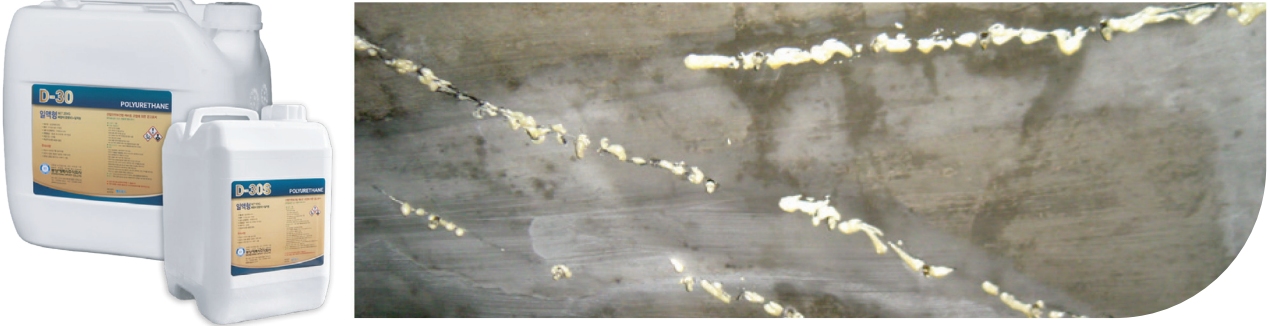
Quality

Item \ Subject	GS-500	
Main Ingredients	Epoxy Resin, Polyamidamin	
Color	Light Gray	
Mixing Ratio	Main : Hardener = 2 : 1	
Pot Life	60min ± 10 (25°C)	
Finger Touch Cure Time	18hours ± 5 (25°C)	14hours ± 5 (25°C)
Curing Time	24 ~ 36hours (25°C)	
Application Range	damp	wet area

16

MID-HARDNESS URETHANE FOAM GROUT
(CONCRETE, UNDERGROUND STRUCTURE INDEX ONLY)
D-30

30 is the urethane water-stopping material that is one-liquid & semi-rigid type. It's developed to stop water leakage from cracks of ground and underground concrete structures. Originally, previous water-stopping materials are divided into soft type and hard type. The hard type is used for ground structure and the soft type for underground structure. But D-30 can be used for both of them. There are less defects because the formation of its cell is dense and Tension rate is good. And it's easy to work and remove cell after finish the work as well.



Features

- Easy to work due to one-liquid type
- Easy to inject and finish the work
- Little hardening contraction
- Excellent water-stopping function
- High level of adhesion

Uses

- Subway, Cavity, Water-stopping of leaking areas of joint
- Slab, Balcony, Underground parking lot, water-stopping of leaking area.
- Harbor, Dam, Waterway etc.

Quality

Item \ Subject	D-30
Mixing Ratio	One Liquid Type
Reaction Time	First 2minutes ± 5 (25°C)
Reaction Magnification	Foaming rate - 10 times ± 3
Application Scope	For stoppping water leakage from small cracks
Special qualitis	As itsfoaming rate is low, it is good for stopping water leakage from small cracks

17

EPOXY PRIMER AGENT

THC-3002

Acid-resistant epoxy flooring materials have been developed to prevent corrosion of existing flooring materials and concrete facilities by sulfuric acid, hydrochloric acid, nitric acid and acetic acid, and have been applied to various industrial sites.

The acid-resistant epoxy is a polymer compound produced by a combination of epichloro-histine and bisphenol-A, which is durable, abrasion-resistant, mechanical strength, adhesion, and thermosetting polymeric epoxy resin that can be applied in many applications, especially with excellent acid resistance, drug resistance, and suitable curing agents.

It is a special acid resistant product that forms a strong hardening material because it forms a three-dimensional net structure.



Features

- Easy to penetrate deeply into concrete basis due to low viscosity
- Can reinforce where the basis is weak
- Enhance the adhesion of epoxy resin.

Uses

- For undercoating agent before coating, lining, resin mortar, color mortar
- Excellent acid-resistance, root-top water-proofing

Quality

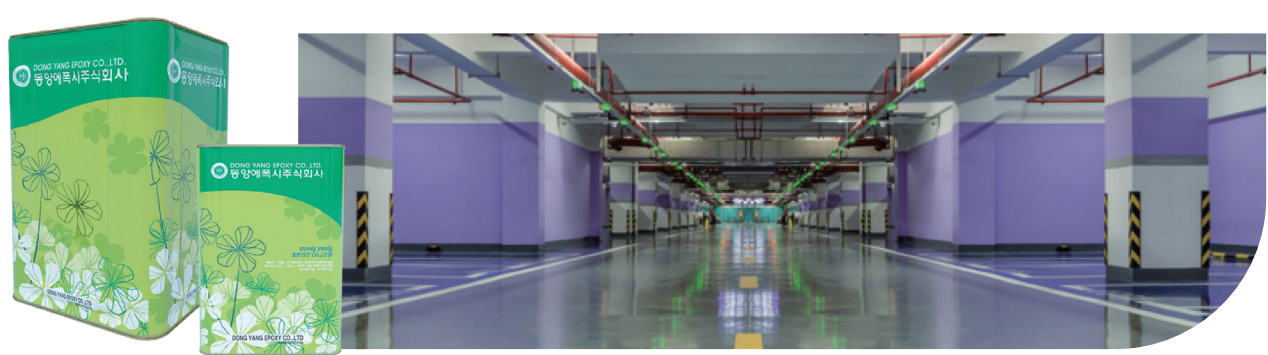
Item	Subject	THC-3003
Main ingredient		Epoxy Resin, Polyamidamin
color		In every color
Mixing Ratio		Main : Hardener = 4 : 1
Pot Life		1hours 15min ± 1hours (25°C)
Finger Touch Cure Time		12hours ± 3 (25°C)
Curing time		24~36hours (25°C)

18

EPOXY COATING AGENT

THC-3003

THC-3003 Epoxy Coating Material has excellent adhesion, durability, anti-corrosion, oil-resistance, water-resistance and chemical-resistance. It is suitable to use for protecting concrete structure due to its characteristics of anti-corrosion, dust-prevention and so on. It is also applied to the floor of factory and warehouse because it can be reduced the construction period and cost.



Features

- Can reduce the construction period
- Easy to work
- Can verify the color as demand

Uses

- For floor coating of parking area, warehouse, gas station
- For floor coating of factory, laboratory, etc

Quality

Item	Subject	THC-3003
Main ingredient		Epoxy Resin, Polyamidamin
color		In every color
Mixing Ratio		Main : Hardener = 4 : 1
Pot Life		1hours 15min ± 1hours (25°C)
Finger Touch Cure Time		12hours ± 3 (25°C)
Curing time		24~36hours (25°C)

19 EPOXY LINING AGENT THC-3004

Epoxy floor lining material, THC-3004 is made of solvent-free agent to be painted with the thickness of 3mm and conceal rough surface of the substrate. Its excellent leveling effect and neat surface status create an elegant interior atmosphere. It has excellent anti-corrosion function and prevents the repetitive shocks from being transferred into the substrate because it is applied thickly with high level of chemical resistant film. As a result of this, it's free from the problem of peeling-off caused by substrate damage. In addition, it's easy to remove the dirt or dust and clean the floor as there is no joint in the floor.



Features

- Sleek surface, excellent in covering bumps, pores or other defects on the ground surface
- No joints, good for thorough maintenance against dust and particles
- Great self-leveling, ensuring a good surface finish (provided that the work was done well enough)
- Outstanding wear resistance for the paint film to last for a long time
- Easy-to-work floor paint which users can easily adjust the floor thickness

Uses

- Floors of pharmaceutical companies, food-processing factories, hospitals, electric / electronic / precision industries, tape / film factories and other places which dust proofing is required
- Floors of offices or buildings that need luxury interior.
- Commercial spaces like convenience stores and service industries
- Chemical factories and confectionary factories where stable chemical-resistance is required

Quality

Item	Subject	THC-3004
Main ingredient		Epoxy Resin, Polyamidamin
color		In every color
Mixing Ratio		Main : Hardener = 5 : 1
Pot Life		40min ± 10 (25°C)
Finger Touch Cure Time		18hours ± 3 (25°C)
Curing time		24 ~ 36 (25°C)

20 NONSLIP POWDER DY-0007

DY-0007 Nonslip Powder is a high-functional and ultra-high-molecular-weight polymer powder mixed and used for floor paint. As a unique ultra-high molecular weight polymer powder material, its excellent mechanical strength and chemical resistance enables a range of application in epoxy, polyurethane, acrylic and water-soluble paints.

Features

- Non-slip effect
- Anti-noise effect (removes noise from tire friction)
- Excellent abrasion-resistance & extended coating life
- Extinction effect & easy contamination removal
- Simple process & affordable price

characteristic

- Even surface embossing
- Excellent non-slip and noise prevention effect
- No bubbling
- Long-lasting non-slip surface (resistance to abrasion, chemical and impact)
- Can be applied to various colors and transparencies
- Does not spoil easily and is easy to clean
- Simple and convenient workability
(Can be used with general coating rollers, brushes and spray guns)
- Does not require additional coating work
- Long-lasting coating life
- Reduces costs



21 INSULATION WATERPROOF PAINT DY-POWER PLUS COAT

Insulating (thermal barrier coating) and waterproofing made of materials having structural characteristics such as Alumini Silicate, vacuum ceramics. etc. and mixed materials adding sunscreen agent and anti-aging agent to high elasticity acrylic emulsion resin, having advantages of simple construction work, long-lasting waterproofing life, keeping cool in summer and room temperature warm in winter with thermal barrier to prevent heat from getting out of the room and also having physical property to finish with oil-based top coat.



Source: JTB News

Features

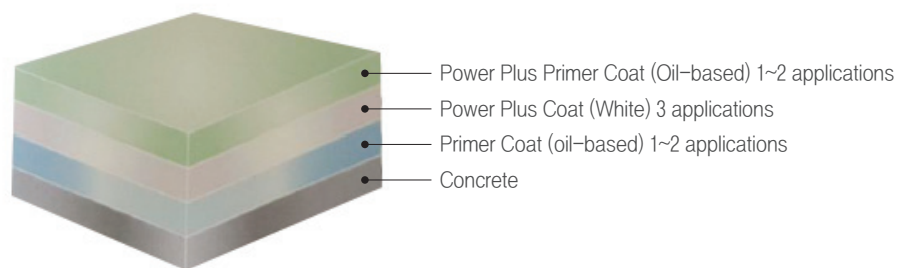
- Strong against UV and Long-lasting waterproofing life.
- Excellent thermal barrier (insulation) effect.
- Excellent adhesion.
- Attachable to any material (Optional use according to Primer Coat material)
- Cool in summer and warm in winter.
- Eco-friendly (Water-based)

Application

- Rooftop Concrete floor exposed (the exterior)
- Asphalt shingle, etc.
- Tent
- Container

Properties

Appearance	White viscous liquid
Chief Ingredients	Alumini Silicate Vacuum ceramic and Acryl
Solid content	68 % ~ 70 %
Viscosity	10,000 (± 1,000)
P H	6.8 ~ 7.0
Storage Stability	Good
Cat.	Water-based



Dongyang Epoxy
prioritizes nature and human's
living environment.

Having passion for better products and considering the perspective of our customers are the greatest values of Dongyang Epoxy. We will ceaselessly strive customer satisfaction by selecting our products and guarantee satisfaction once more after using our product for a long time.

